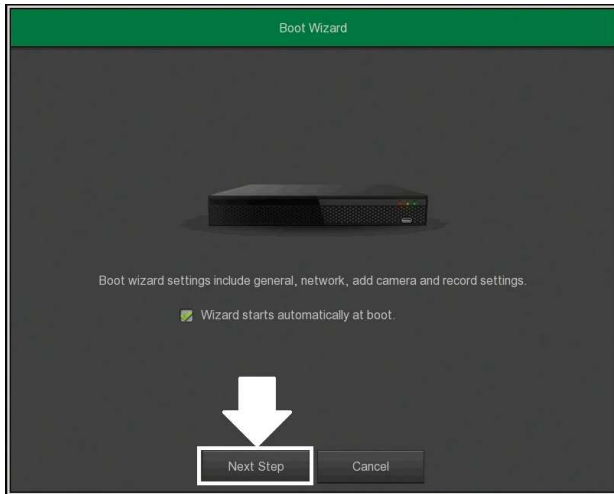


# WI-FI KIT



admin

admin

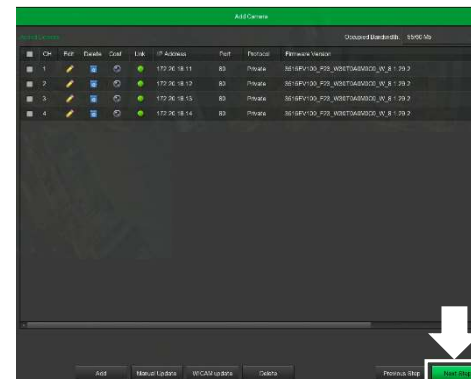
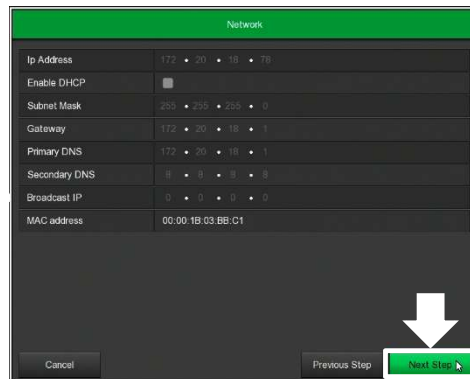
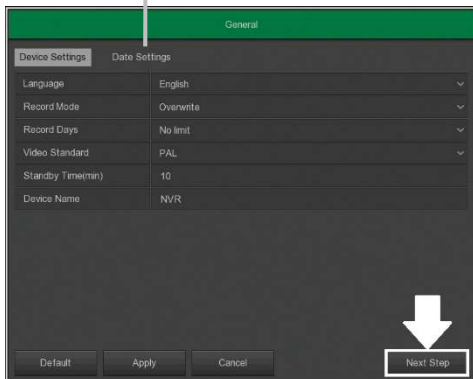
Lingua  
Language  
Langue  
Idioma



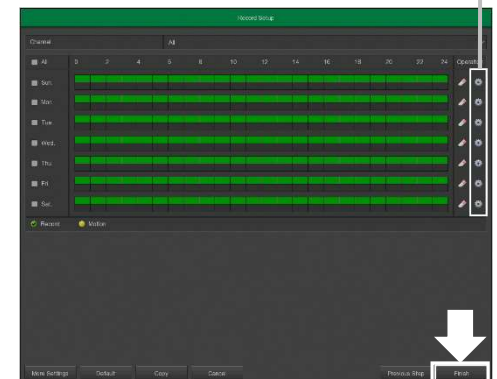
Modifica Password  
Modify Password  
Modifier Mot de Passe  
Modificar Contraseña

Avanti  
Next  
Suivant  
Siguiente

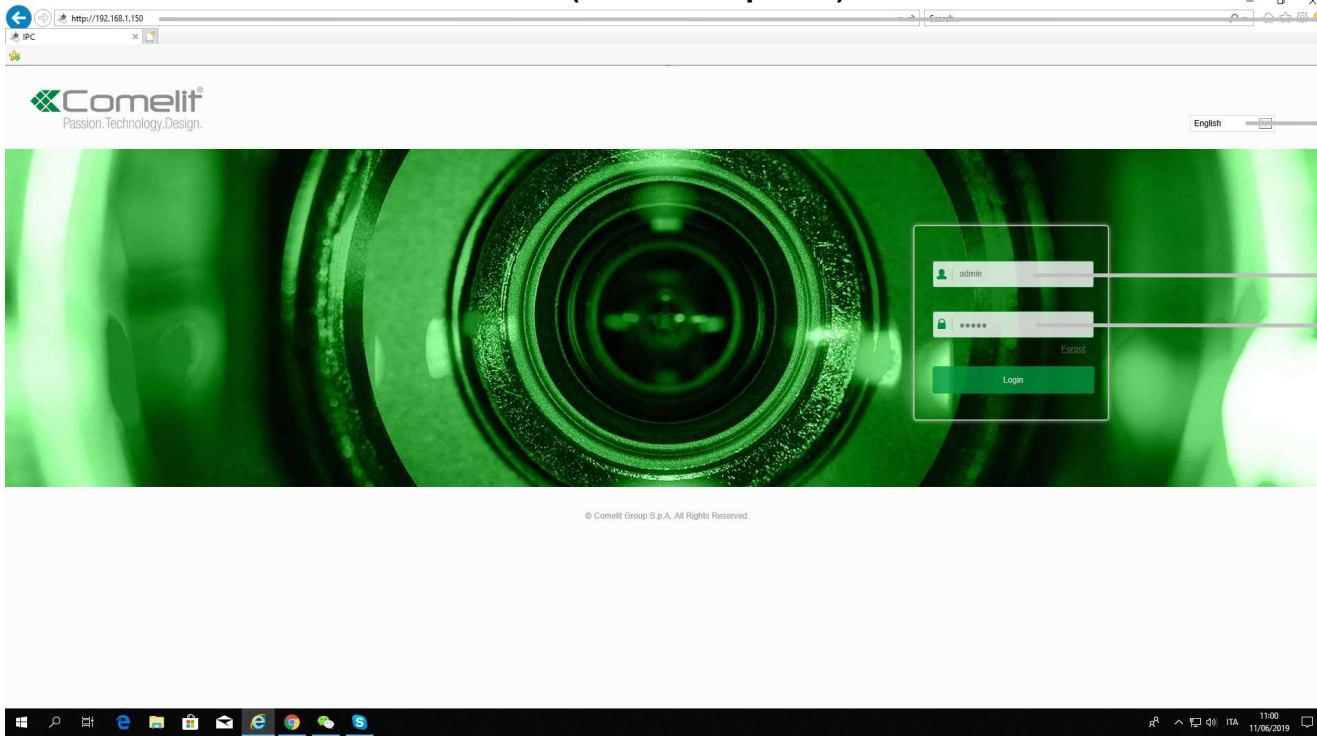
Modifica data/ora  
Edit date/hour  
Modifier date/heure  
Modificar fecha/hora



Modifica impostazioni registrazione  
Edit recording settings  
Modifier paramètres d'enregistrement  
Editar la configuración de grabación



# WEB (Internet Explorer)



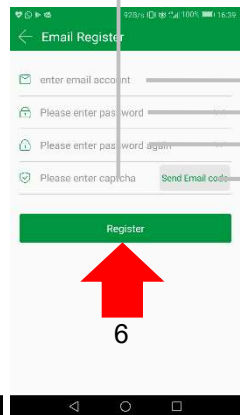
IP  
Lingua  
Language  
Langue  
Idioma

admin  
admin

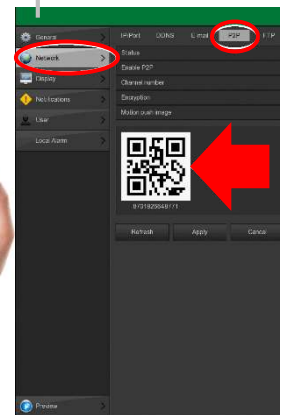
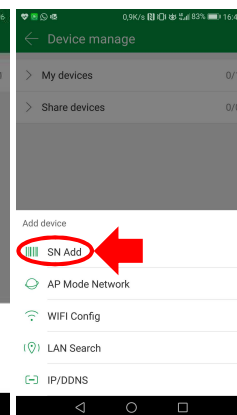
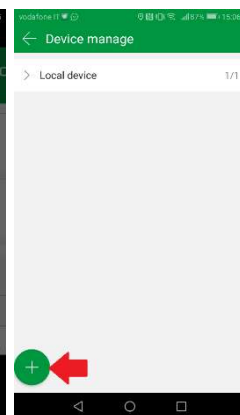
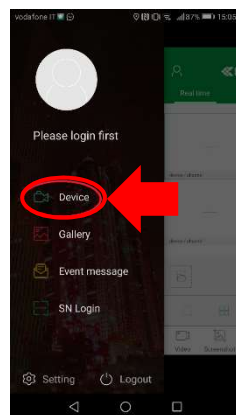


5. Inserire codice ricevuto via e-mail  
Enter code received via e-mail  
Entrez le code reçu par e-mail  
Ingrese el código recibido por e-mail

## App Comelit View Smart

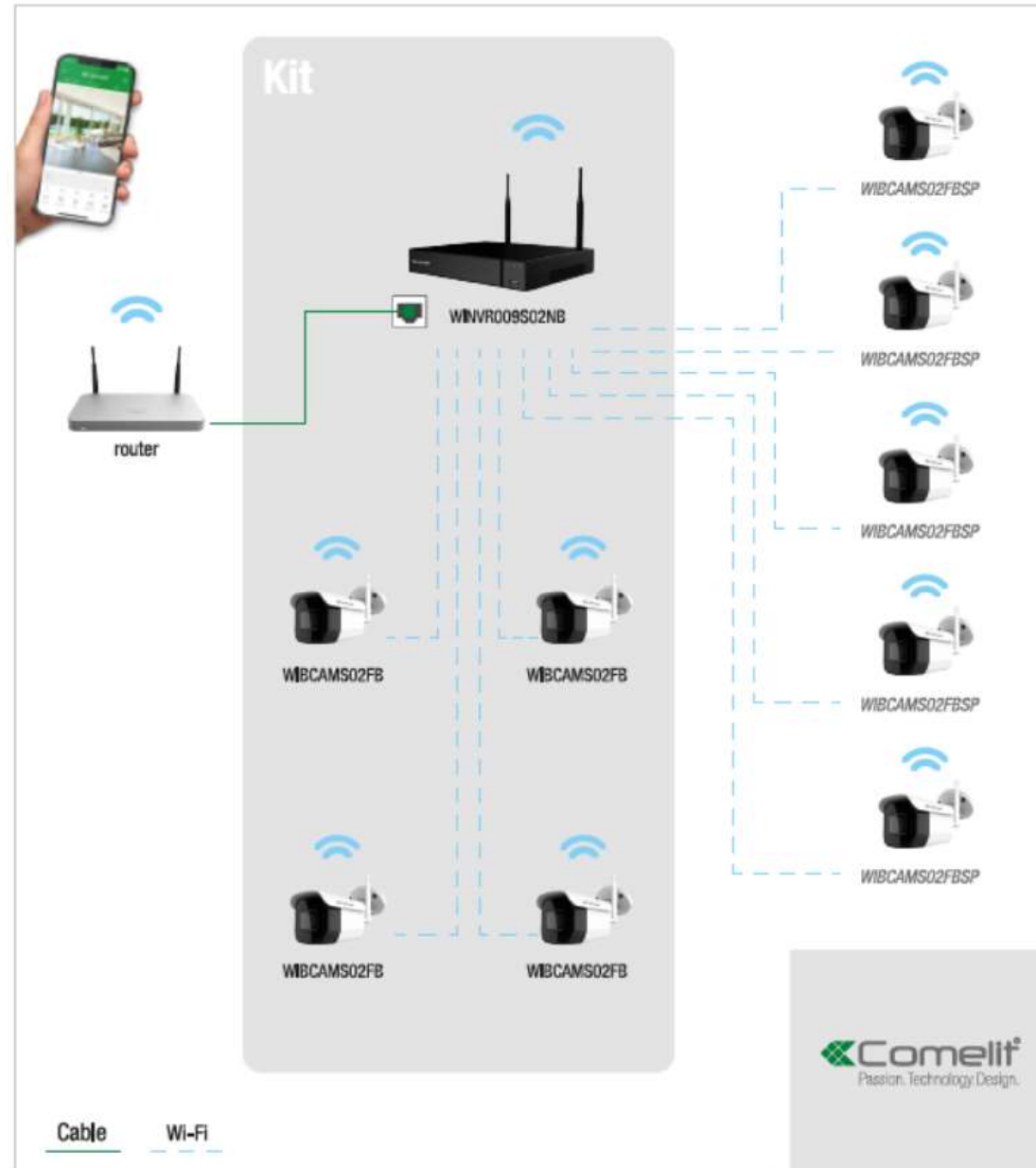
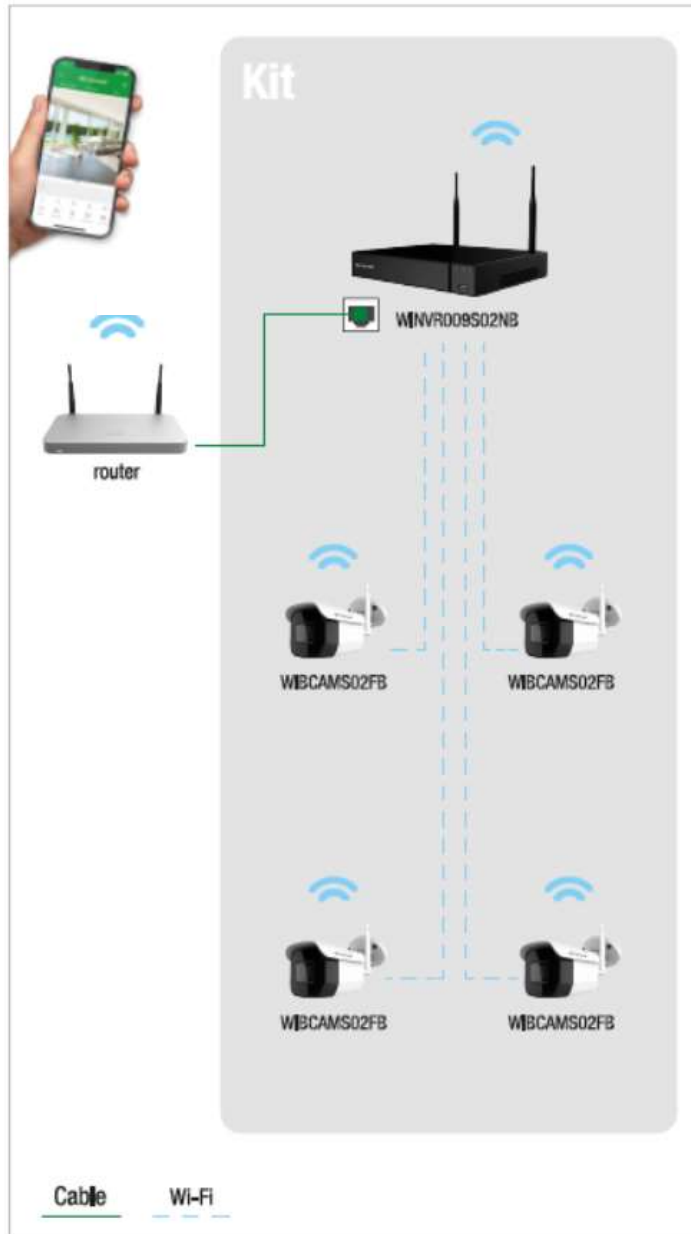


1. e-mail  
2. Password  
3. Password  
4. click



NVR menu. Rete → P2P  
Network → P2P  
Réseau → P2P  
Red → P2P

# Max Extencion





# Add WiFi camera

